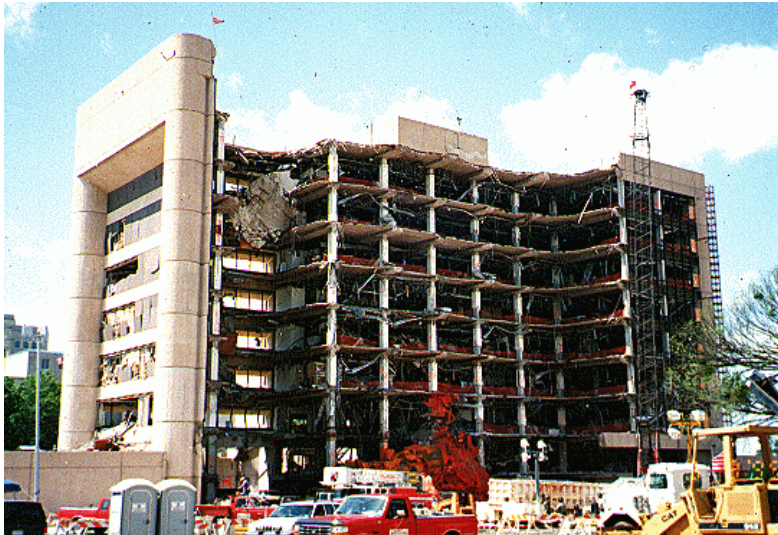




JOHN A. MARTIN & ASSOCIATES, INC.
RESEARCH & DEVELOPMENT DEPARTMENT
1212 S. FLOWER ST., LOS ANGELES, CA 90015
<http://www.johnmartin.com/research>

Special Project Series

**INVESTIGATION OF THE EXTENT OF STRUCTURAL DAMAGE
CAUSED BY THE OKLAHOMA CITY BOMBING DISASTER**



Appointed by the Governor of Oklahoma to the *Governor's Task Force for Damage Assessment*, John A. Martin and Associates, Inc. (JAMA) was charged with a detailed evaluation of the extent of structural damage caused by the terrorist bombing of April 19, 1995. In addition to the JAMA team serving as structural assessment experts, the *Task Force* included Barret Consulting Group heading the FEMA Grant Management function, KPMG-Peat Marwick LLP coordinating the local business/government financial loss assessments, and Adjusters International undertaking damage assessment for the purposes of Insurance adjustment.



This man-made disaster, caused by a 4800 pounds of ammonium-nitrate fuel-detonated bomb, left 168 dead, 400 injured, 381 buildings damaged, and \$652 million in estimated financial impact. The damage was spread to a radius of several blocks around the Oklahoma City Federal Building, with structural collapses observed up to three blocks away from the detonation locus. Structural damage, as well as broken glass and doors were spread even wider.



John A. Martin, Jr., president of JAMA, was a key player in the elaborate decision-making process to determine possible options for the damaged building. The final decision was to demolish the structure.