



JOHN A. MARTIN & ASSOCIATES, INC.
 RESEARCH & DEVELOPMENT DEPARTMENT
 1212 S. FLOWER ST., LOS ANGELES, CA 90015
<http://www.johnmartin.com/research>

Structural Engineering Software Series

JAMA STRUCTURAL DESIGN SYSTEM (JAMA-SDS)

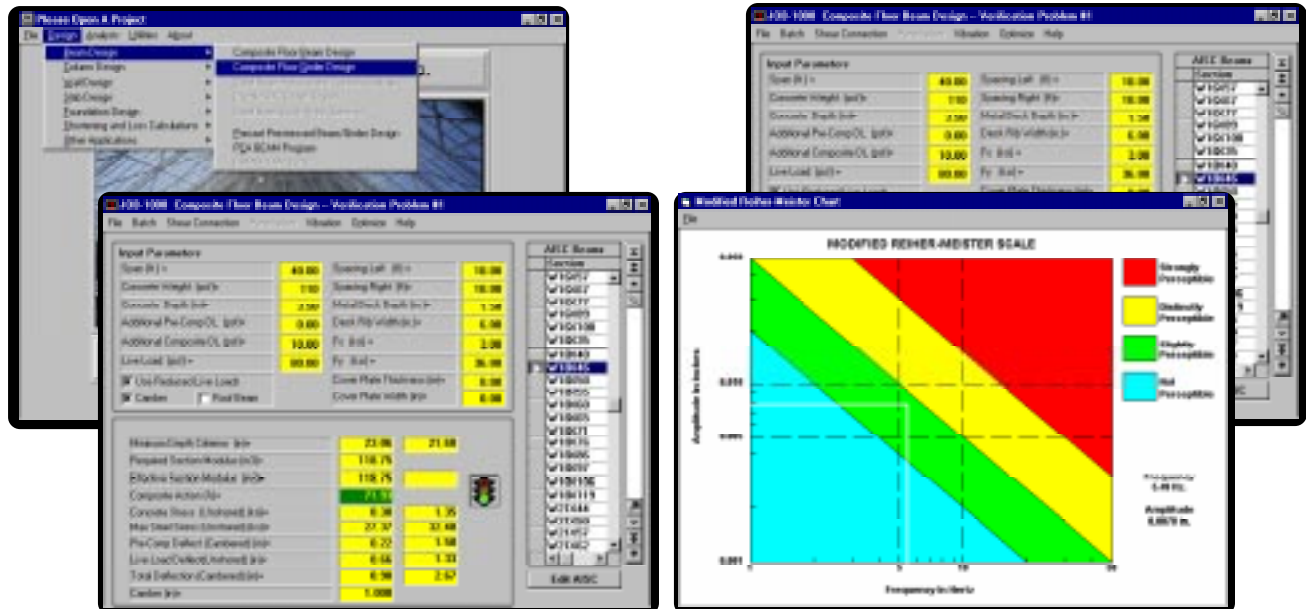
Integrated Software Systems for Structural Design, Analysis, and Productivity



JAMA-SDS is an integrated system of proprietary structural design, analysis, and project management software programs developed by and for the exclusive use of John A. Martin and Associates, Inc. and its affiliate offices nationwide.

The system represents the state-of-the-art in software development technology, as well as user-friendliness and ease of use. It features user-configurable input parameter validation, presents recommended values and enforces minimum and maximum limits. Detailed calculations performed by the system, including every minor multiplication and division are available for inspection by the design engineer. These unique features, make the system extremely verifiable and very useful as a training tool for younger engineers.

Extensive use of computer graphics, charts, and images creates a pleasant working environment and promotes a better physical understanding of the numbers involved in the design process.

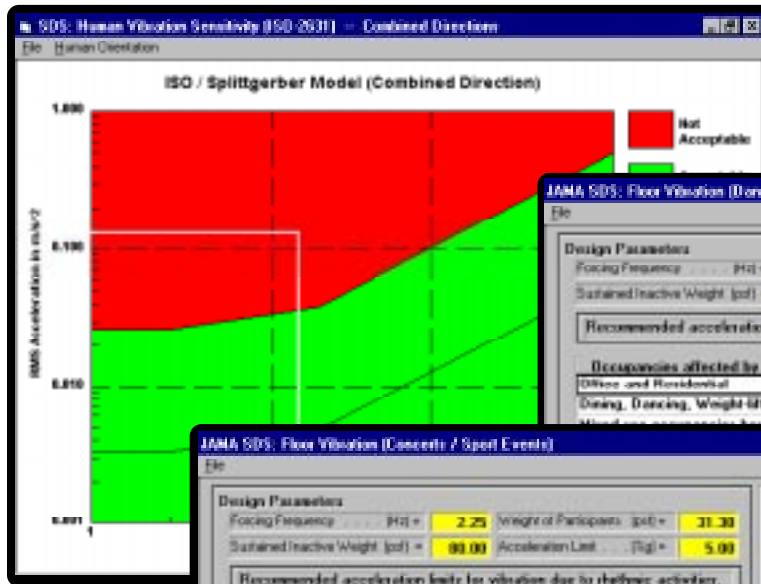




JOHN A. MARTIN & ASSOCIATES, INC.
 RESEARCH & DEVELOPMENT DEPARTMENT
 1212 S. FLOWER ST., LOS ANGELES, CA 90015
<http://www.johnmartin.com/research>

Structural Engineering Software Series

JAMA STRUCTURAL DESIGN SYSTEM (Continued)



JAMA-SDS is the direct descendent of the Calc-Writer Structural Design System which was developed by JAMA during the 1980s. While maintaining the popular features of its

Occupancies affected by the vibration	Acceleration limit
Office and Residential	0.4 to 0.7
Dining, Dancing, Weight lifting	1.5 to 2.5

Occupancies affected by the vibration	Acceleration limit
Office and Residential	0.4 to 0.7
Dining, Dancing, Weight lifting	1.5 to 2.5
Mixed use occupancies housing aerobics	2
Aerobics, rhythmic activities only	4 to 7

Occupancies affected by the vibration	Acceleration limit
Office and Residential	0.4 to 0.7
Dining, Dancing, Weight lifting	1.5 to 2.5
Mixed use occupancies housing aerobics	2
Aerobics, rhythmic activities only	4 to 7

Frequency (Hz)	1st Harmonic	2nd Harmonic
0.50	4.88	8.50
1.00	5.83	6.57

DOS based predecessor, JAMA-SDS is developed from the ground up within the user-graphics-interface provided by the Microsoft Windows operating system.

A sophisticated database system keeps all project-specific information in one central place, eliminating time wasted on searching various files to find project-specific information.

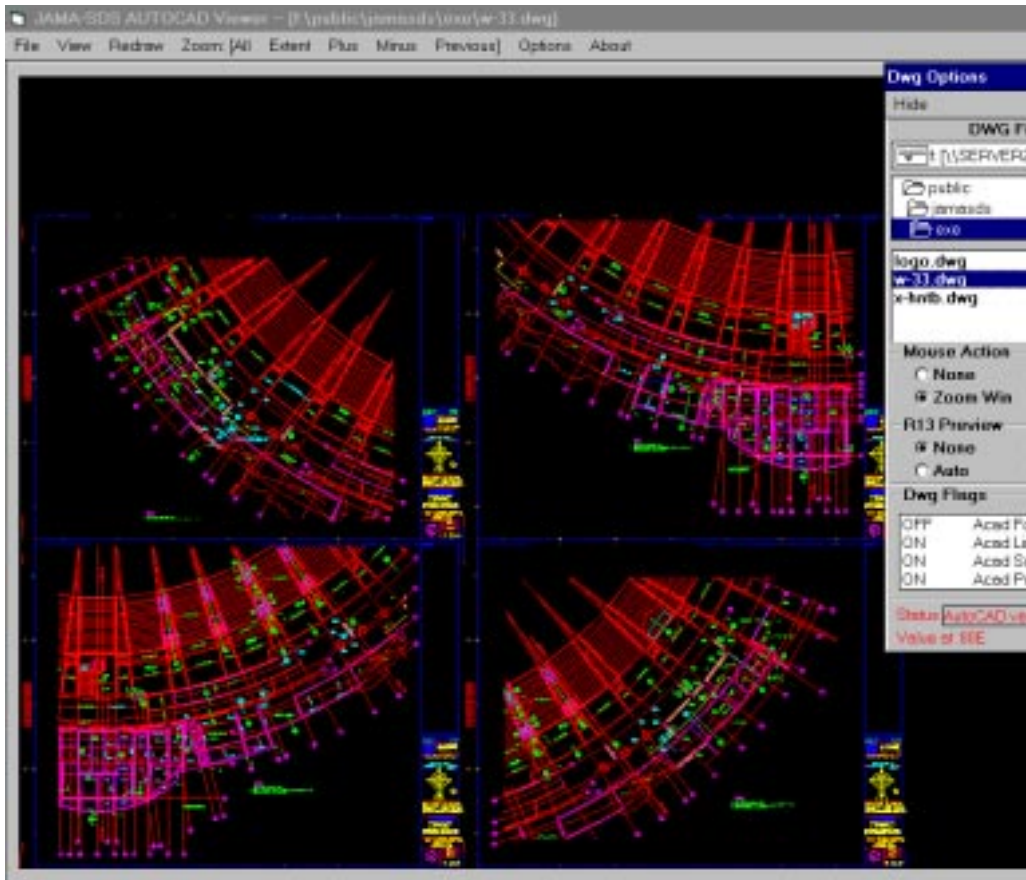
Investment in development and maintenance of state-of-the-art software systems such as Calc-Writer and JAMA-SDS is yet another reason why John A. Martin and Associates, Inc. has been a leading force in structural engineering practice for more than 40 years.



JOHN A. MARTIN & ASSOCIATES, INC.
RESEARCH & DEVELOPMENT DEPARTMENT
1212 S. FLOWER ST., LOS ANGELES, CA 90015
<http://www.johnmartin.com/research>

Engineering Productivity Software Series

Introducing the new JAMA-SDS AutoCAD Viewer Application



Available from JAMA-SDS Utilities menu, this in-house developed viewer views drawing files starting from AutoCAD version 2.5 to the new R13 version. While this is intended to be a viewer and not an editor, it can clip regions and copy them to the clipboard.

An *Options Dialog* is used to select the various parameters. In the Options Dialog, a single mouse-click selects a disk drive or folder and causes the contents of the folder to be displayed. It takes a double-click to select a specific file for loading. The mouse-action defaults to *Zoom Window* but can be changed to *Pan* to allow placement of the image or *Clip* to allow clipping of a region for cutting to the clipboard or zooming. The *R13 Preview* mode enables viewing of embedded preview for R13 drawing files. An R13 drawing file can have 0, 1 or 2 embedded previews. Zoom only works if this setting is set to None. The *Auto* option views any preview embedded in the drawing. Metafiles are used before bitmaps if both are available. Finally, *Drawing Flags* allow you to set a host of different features which determine how an Auto-CAD drawing will be viewed. Double-clicking them in the list box toggles each option. The Options Dialog closes with *Hide*.

In addition to various *Zoom* commands, the Main window menu contains *View* which reads the drawing file from the disk, *Redraw* which refreshes the current state of the screen and the *Options* item to open the Options dialog box. *File-Print* prints the current view and *File-Copy-To-Clipboard* cuts the image to the Clipboard for possible inclusion in Word or similar documents.