

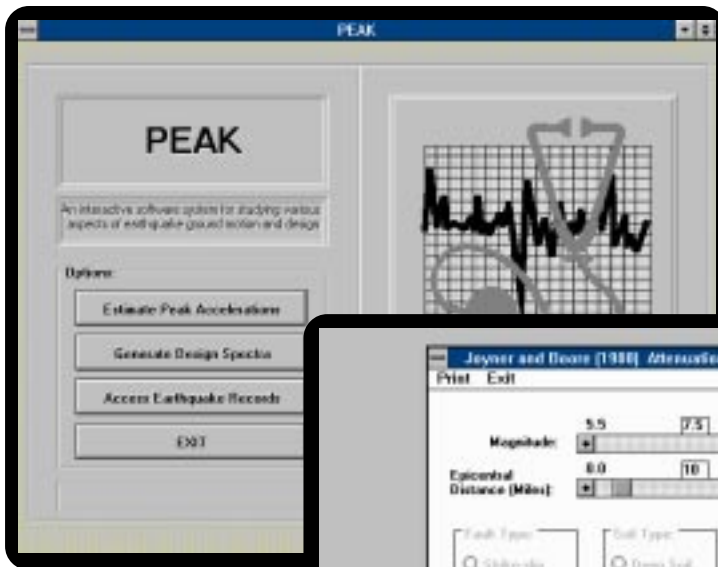


JOHN A. MARTIN & ASSOCIATES, INC.
 RESEARCH & DEVELOPMENT DEPARTMENT
 1212 S. FLOWER ST., LOS ANGELES, CA 90015
<http://www.johnmartin.com/research>

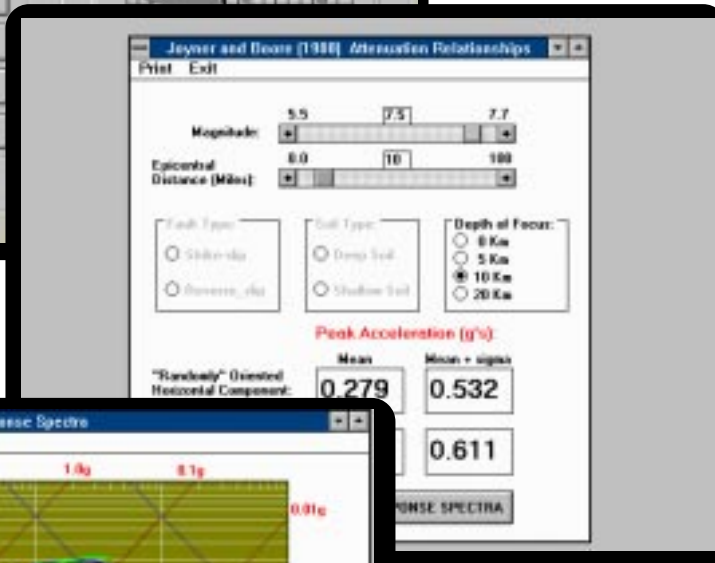
Earthquake Engineering Software Series

PREDICTIVE TOOLS OF EARTHQUAKE ENGINEERING (PEAK)

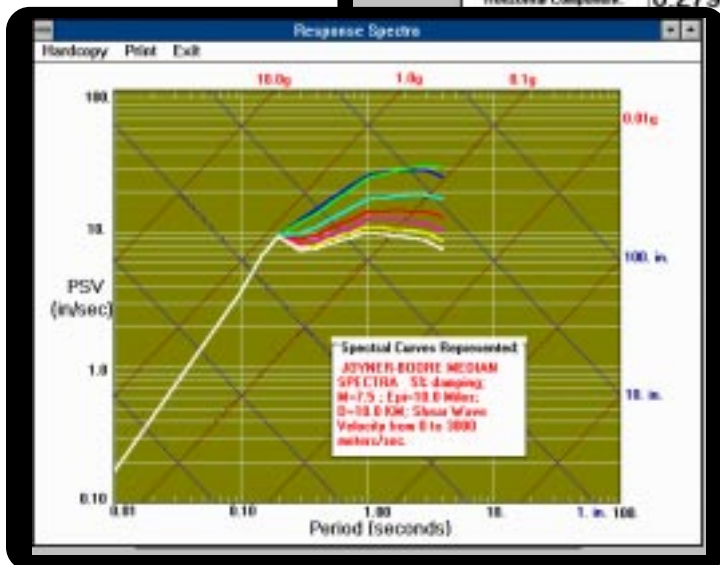
To the general public, earthquake prediction often means "exact" determination of time and location of the next major event. While current state of knowledge is far from satisfying this image, earthquake engineering does possess means by which the various aspects of future earthquake ground motions can be estimated.



By providing a glimpse of what can be termed as predictive tools of earthquake engineering, a more realistic public understanding and expectation can be achieved. Various peak and spectral attenuation relationships are made open to the users investigation. Earthquake acceleration, velocity, and displacement records from various earthquakes may be examined, manipulated, and compared.



Developed as a part of the first Multimedia Earthquake Encyclopedia, this product was designed for broad educational use at home, schools, colleges and libraries.



It was developed under a grant from the State of California, Department of Commerce, Office

of Competitive Technology under the provisions of the Alfred E. Alquist Earthquake Act.

State-of-the-art software systems are yet another reason why John A. Martin and Associates, Inc. represents more than 40 years of design leadership.